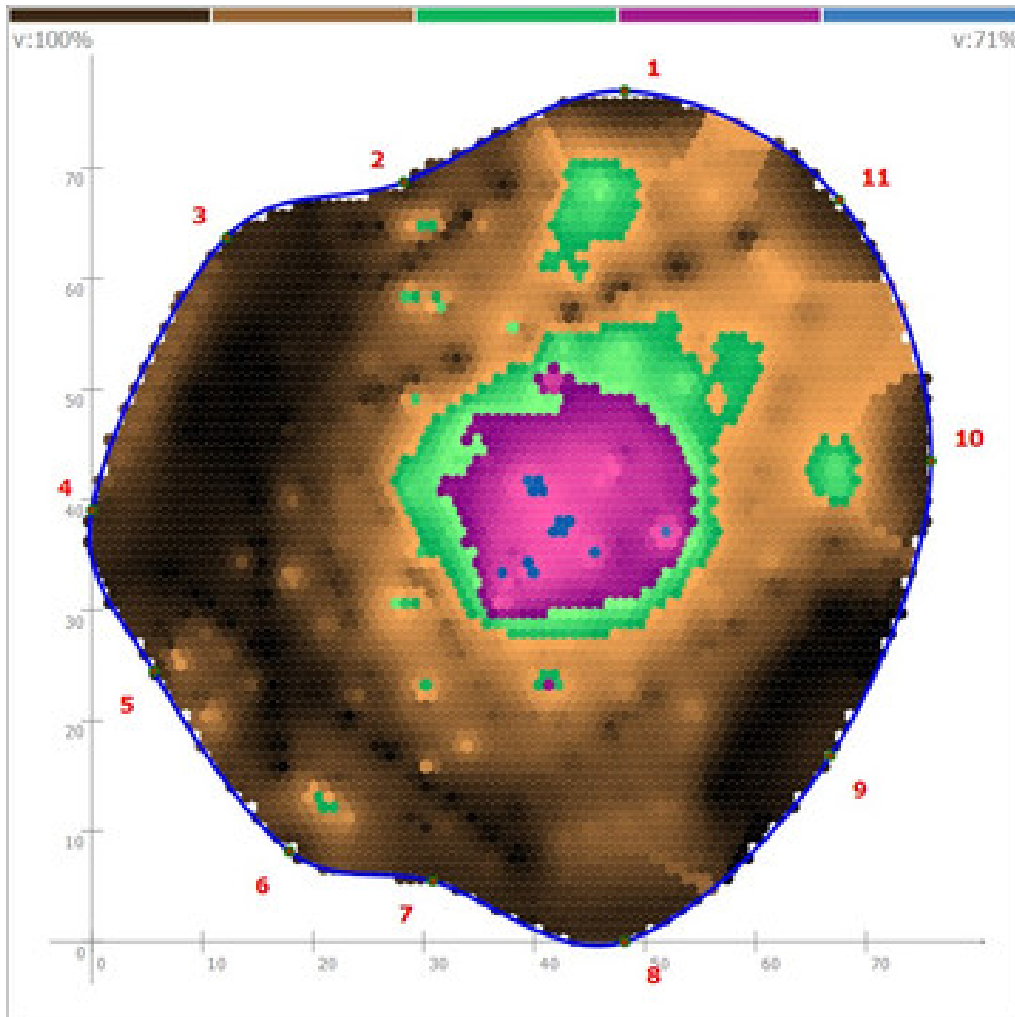


Endophyte colonization of common beech with infection of brittle cinder (*Kretzschmaria deusta*)



Wood-decaying fungi such as the brittle cinder *Kretzschmaria deusta* have massive effects on the stability and stem breakage of trees. Spreading behavior within a tree is difficult to estimate and thus to combat. A starting point for the prognosis of the spreading behavior of wood-decaying fungi and their control is the use of endophytes. In the example of the brittle cinder *Kretzschmaria deusta* on the beech *Fagus sylvatica*, basic questions concerning this fungus-host combination are dealt with. The aim is to identify differences in the endophytic colonization of healthy and infested trees and to identify potentially antagonistic organisms.

Financing of project: Research Funding HGU

Project Management: Dr. Martin Leberecht (Department of Urban Horticulture)